

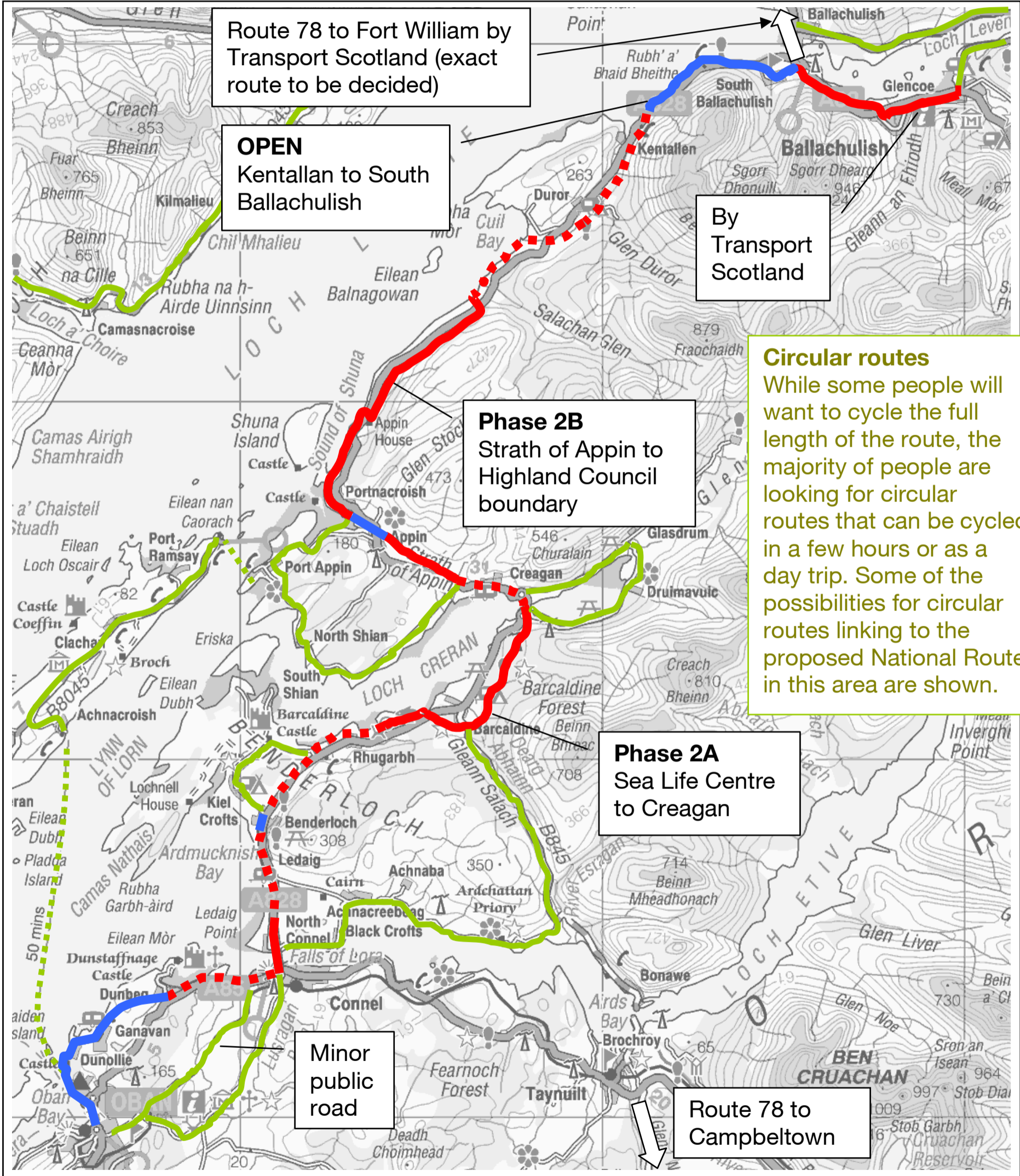
Oban to Ballachulish – Proposed Route

Sustrans Phase 2 (2008 – 2009)

- 2A** 4 miles / 6.5 km
- 2B** 7 miles / 11 km

Key

- Open
- Phase 2 (2008/09)
- - - Proposed Route
- Circular Routes



Circular routes
While some people will want to cycle the full length of the route, the majority of people are looking for circular routes that can be cycled in a few hours or as a day trip. Some of the possibilities for circular routes linking to the proposed National Route in this area are shown.

Sustrans May 2008